



Total Heat Exchanger Solutions

a division of  T. H. Industrial Solutions

ON OR OFF SITE SERVICE OPTIONS FOR PLATE & FRAME AND SHELL & TUBE HEAT EXCHANGERS



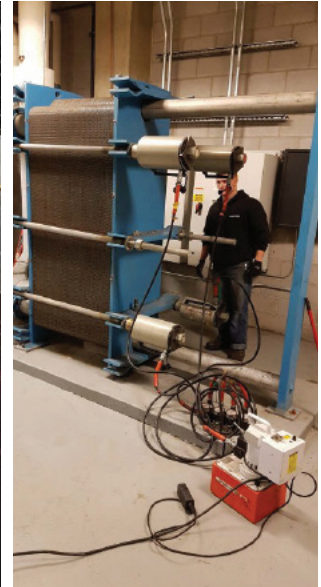
ONSITE CHEMICAL FLUSHING, HIGH PRESSURE CLEANING
& OFFSITE CHEMICAL DIPPING



PLATE AND/OR GASKET DIRECT REPLACEMENT AND INSTALLATION FOR
ARMSTRONG, ALFA LAVAL, VICARB, TRANTER, LEITCH, BELL & GOSSETT, APV & MORE



BLACK LIGHT &
DYE PENETRANT TESTING



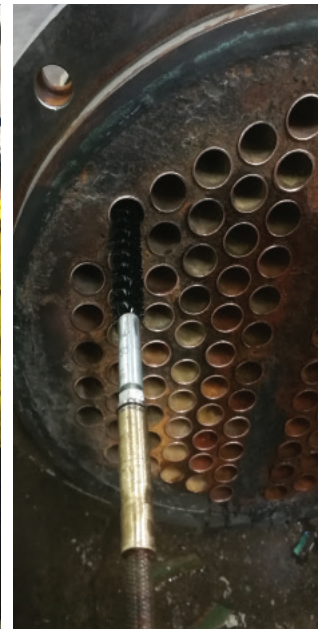
HYDRAULICS FOR
DISASSEMBLING AND TIGHTENING



TUBE VACUUM TESTING, CLEANING, REPLACEMENT,
TUBE PLUGGING, SLEEVING AND EXPANDING



PRESSURE WASHING,
CHEMICAL CLEANING



BORESCOPE IMAGING FOR LOCATING
CRACKS, BLOCKAGES, PUNCTURES ETC.



TUBE BUNDLE REMOVAL FOR
REPAIR OR SERVICE



SHELL & TUBE
PRESSURE TESTING

*CUSTOM TUBE BUNDLES ALSO AVAILABLE

 Proudly Canadian



T. H. Industrial Solutions

Proudly Represents These Industry Leaders



Industrial Heat Exchangers Manufacturer



Butterfly Valves Actuators Ball Valves



Bag Filter Housings Magnets



INSTRUMENTS

Gauges Pressure Sensors



Indexing Filters Bag Filters



Sand Filtration Separator Filtration Disc Filtration



Custom Rare Earth Magnets



Plate Heat Exchanger Service Shell and Tube Service



Plate & Frame Shell & Tube Cleaning / Testing / Regasketing

Health & Safety Accreditations



Head Office

1550 Bayly Street, Unit 15
Pickering, ON L1W 3W1
Phone (905) 831-4963 Fax (905) 831-0042
service@th-is.ca

Hamilton Office

76 Harlowe Road, Units 5, 6 & 7
Hamilton, ON L8W 3R6
Phone (905) 318-0777 Fax (905) 318-8422
jharms@th-is.ca

www.th-is.ca

www.heatexchangerontario.com

www.totalheatexchangersolutions.com

www.coolingtowerfiltrationontario.com

www.ontariomagnet.ca

Proudly partnered with Forests Ontario.

In an effort to restore the health of our environment by increasing forest cover and enhancing the resilience of our ecosystems, enabling them to adapt to the effects of environmental change while sustaining a healthier human population a tree is planted after every order placed with our company.

