



# BrazePak™ Brazed Plate Heat Exchangers

EFFICIENT HEAT TRANSFER. COMPACT DESIGN.

Standard **X**change  
a xylem brand

## BRAZEPAK™ HIGH PERFORMANCE BRAZED PLATE HEAT EXCHANGERS



### **High performance.**

BrazePak™ brazed plate heat exchangers offer the highest level of thermal efficiency and durability in a compact, low-cost unit.

### **Compact design.**

The corrugated plate design provides very high heat transfer coefficients, resulting in a smaller surface area. This makes the BrazePak™ an excellent choice; especially where space is a consideration.

### **Solid self-contained unit.**

Thin corrugated stainless steel plates are vacuum brazed together to form a very durable, integral piece that can withstand both high pressure and high temperature.

### **Numerous applications.**

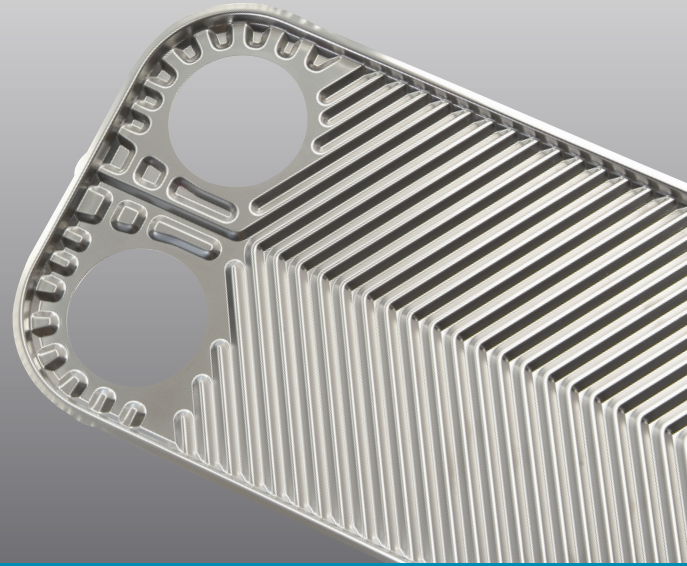
BrazePak™ units are ideal as refrigerant condensers and evaporators, as oil coolers for engines and machinery, and in many other industrial applications.

## THERMAL PERFORMANCE

Standard Xchange unique heat transfer plate designs provide high rates of heat transfer requiring less surface area than conventional shell and tube heat exchangers.

Compare BrazePak™ with conventional shell and tube units:

- One-sixth the size
- One-fifth the weight
- Uses only one-eighth the liquid
- Requires one-third to one-fifth the surface area





## DESIGN PERFORMANCE

### MECHANICAL DESIGN:

Standard design pressures up to 435 psig at maximum design temperature of 450°F  
 Custom designs to pressures of 1000 psig.  
 Minimum design temperature to -310°F

### CONSTRUCTION CODES:

Available codes include; UL, CRN, ASME Sec.VIII Div.1 "U" stamp, ASME Sec.III "N" stamp, Pressure Equipment Directive (97/23EC), China ML, Korean KGS, Brazilian NR-13.

### MATERIALS:

Stainless Steel 316L plates.  
 Copper or Nickel braze material.

### PERFORMANCE:

Single Wall and  
 Double Wall Options

### CONNECTIONS:

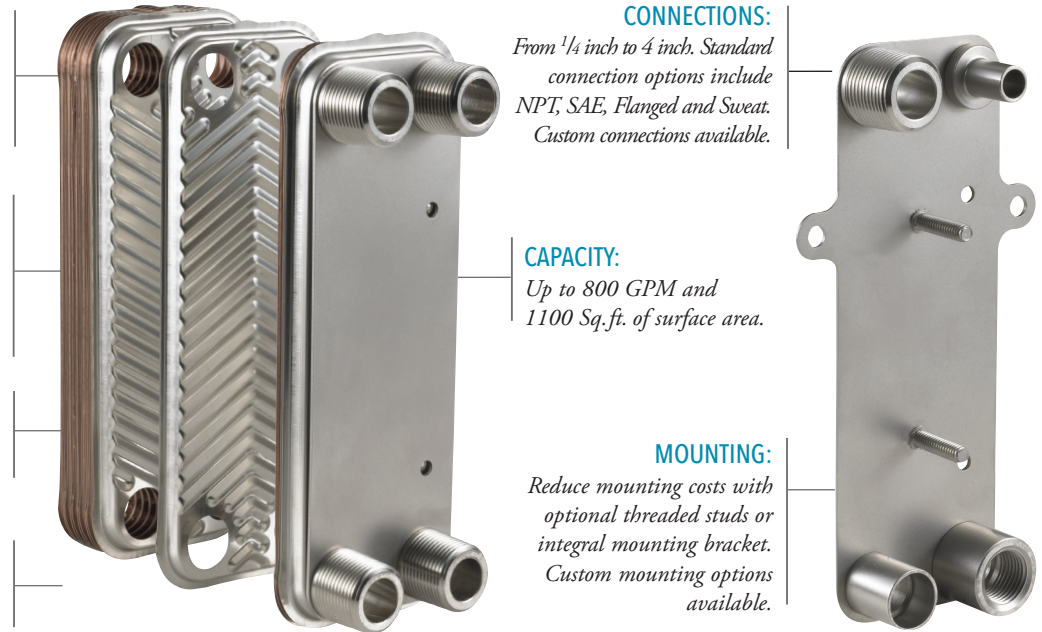
From 1/4 inch to 4 inch. Standard connection options include NPT, SAE, Flanged and Sweat.  
 Custom connections available.

### CAPACITY:

Up to 800 GPM and  
 1100 Sq.ft. of surface area.

### MOUNTING:

Reduce mounting costs with optional threaded studs or integral mounting bracket.  
 Custom mounting options available.

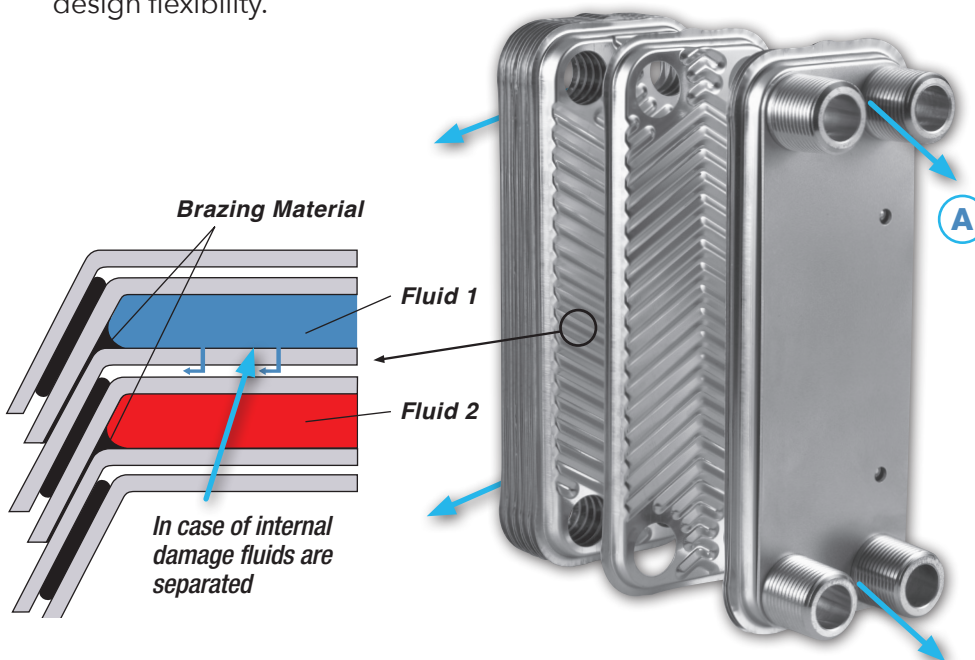


## BRAZEPAK™ BPDW DOUBLE-WALL

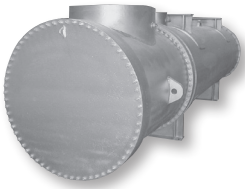
BrazePak™ BPDW Double-Wall brazed plate heat exchangers offer the highest level of leak protection, safety, thermal efficiency and durability in a compact, low cost unit. Standard Xchange advanced lean manufacturing process provides fast deliveries with maximum design flexibility.

### BRAZEPAK™ BPDW DOUBLE-WALL PROVIDES:

- True double-wall construction, including port regions
- Double-wall plate design with unique air vent leak paths
- Complete peripheral braze for additional strength
- Four dedicated leak ports for quick and easy leak detection (A)
- Excellent performance for domestic water applications
- Dependable protection of fresh water streams for cooling of oils and refrigerants



# MODELS OF EFFICIENCY.



## **CENTURY SERIES®**

Engineered/  
customized heat  
exchangers for  
process and other  
heating/cooling  
applications.



## **BRAZEPAK™**

Brazed plate  
heat exchanger.



## **PLATEFLOW®**

Gasketed plate  
& frame heat  
exchanger.



## **AIREX® AND FANEX®**

Air/oil, air/air,  
or air/water  
heat exchangers.



## **PRE-ENGINEERED SERIES**

BCF®/SSCF®/  
SX2000®/B300®  
Pre-engineered  
shell and tube  
heat exchanger.

---

**Standard Xchange**  
a xylem brand

---

**FOR MORE INFORMATION, PLEASE CONTACT:**

---

Standard Xchange  
175 Standard Parkway • Cheektowaga, NY 14227  
Tel +1.800.281.4111 • Fax +1.716.897.1777  
[www.standard-xchange.com](http://www.standard-xchange.com)